

Student Name: \_\_\_\_\_

### Draw a Line from the Inventor to the Invention

Thomas Edison
Eli Whitney
Johann Gutenberg
George Washington Carver
Wright Brothers
Tim Berners-Lee



Peanut Butter



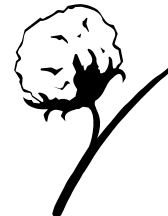
Airplane



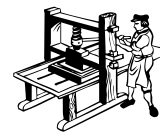
World Wide Web



Phonograph



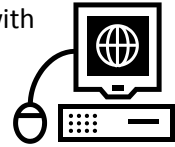
Cotton Gin



Moveable type printing press

## Teacher's Key

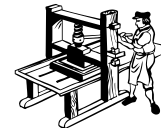
1. **Sir Timothy John Berners-Lee** (1955-) is an English computer scientist credited with inventing the World Wide Web. His parents, both mathematicians, were employed together on the team that built the one of the earliest computers. They taught their son to use mathematics everywhere, even at the dinner table.



2. **Wright brothers, Orville** (August 19, 1871 – January 30, 1948) and **Wilbur** (April 16, 1867 – May 30, 1912), were two Americans who are generally credited with inventing and building the world's first successful airplane and making the first controlled, powered and sustained heavier-than-air human flight on 17 December 1903.



3. **Johannes Gutenberg** (c. 1398 – February 3, 1468) was a German goldsmith and printer who is credited with being the first European to use movable type printing, in around 1439, and the global inventor of the mechanical printing press.



4. **Thomas Alva Edison** (February 11, 1847 – October 18, 1931) was an American inventor and businessman who developed many devices that greatly influenced life around the world, including the phonograph and the long-lasting, practical electric light bulb.



5. **Eli Whitney** (December 8, 1765 – January 8, 1825) was an American inventor best known as the inventor of the cotton gin.

6. **George Washington Carver** (1860–1943) invented peanut butter and 400 plant products.

